

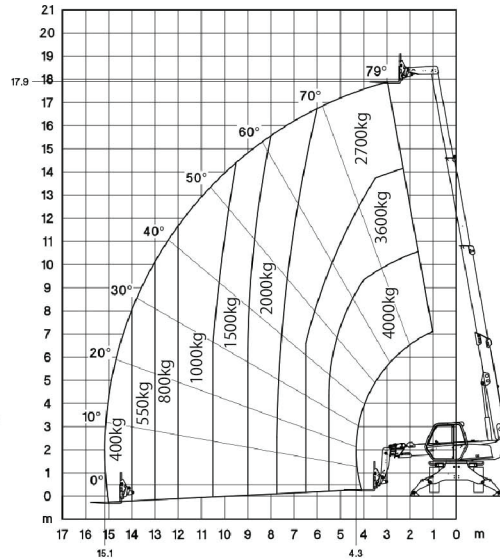
TELEHANDLER ROTATING TYPE



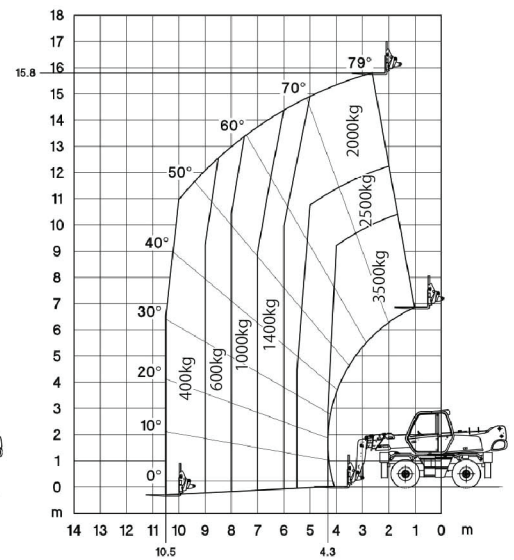
MRT1840



Rotation on stabilizers with forks



Frontal position on tires with forks



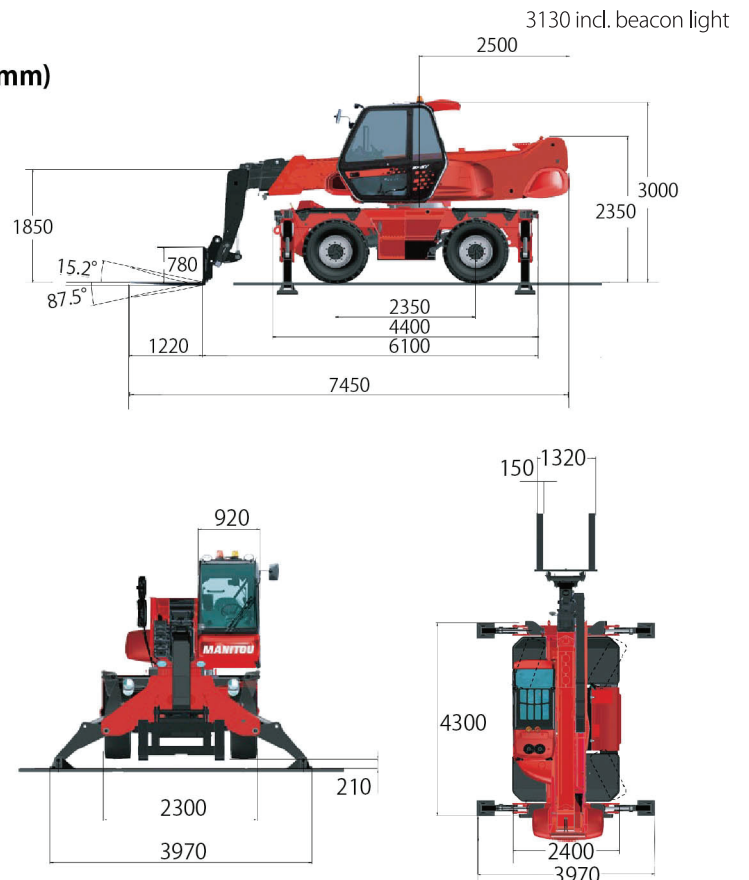
Dimensions

| MAKER | MANITOU |
|--|--------------------------------|
| Model | MRT1840 |
| Max. Lifting Height (m) | 17.9 |
| Max. Outreach (with Forks) (m) | 15.1 |
| Lifting Capacity (on Stabilizers) (kg) | 4000 |
| Turret Rotation (°) | 360 |
| Drawbar Pull (daN) | 8600 |
| Gradeability (°) | 23.9 |
| Min. Frame Outer Turning Radius (m) | 3.90 |
| GVW (kg) | 13390 |
| Max. Travel Speed (km/h) | 32.00 |
| Qualifications | |
| ■ When working | Depends on the attachment |
| ■ When driving on public roads | Large special license required |

※ Engine complies with European Stage 4 emission standards.

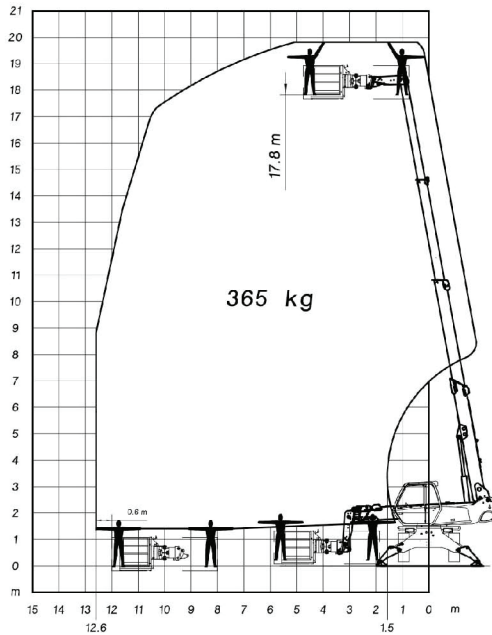
※ The attachments are interchangeable, refer to page 61 for details.

(mm)

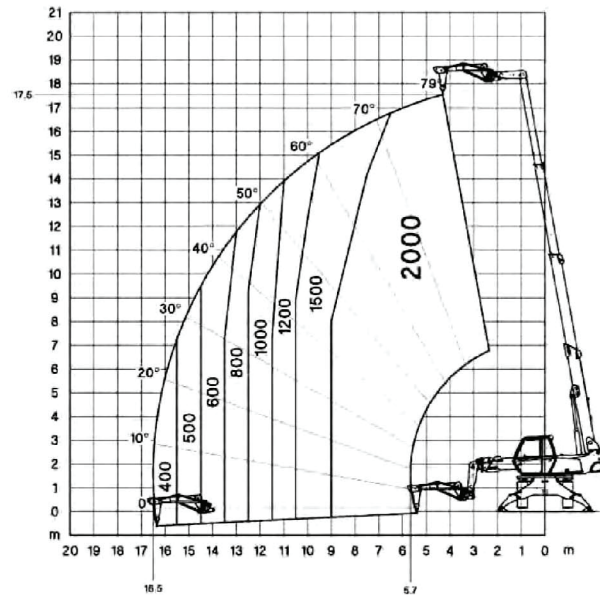


TELEHANDLER ROTATING TYPE

**Rotation on stabilizers with
PSE 4400 / 365 platform**



**Rotation on stabilizers with
extension jib with winch PT2000**



**Rotation on stabilizers
with 2-hook jib P6000**

