

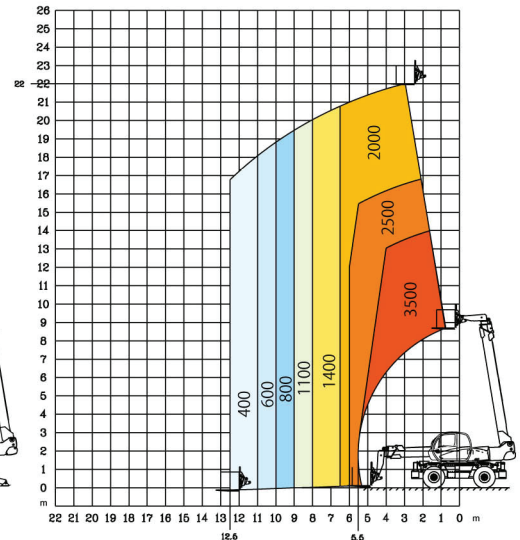
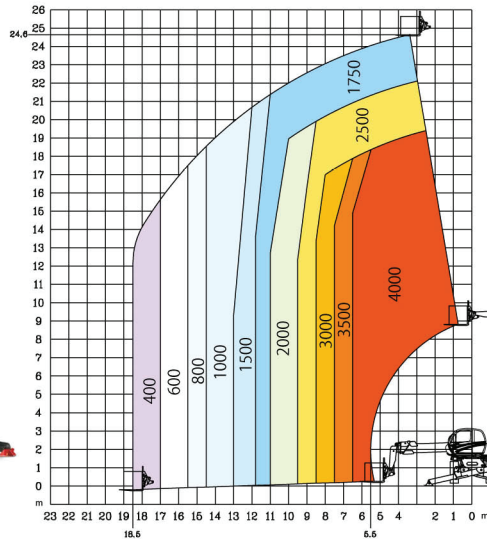
TELEHANDLER ROTATING TYPE



MRT2540P

Rotation on stabilizers with forks

Frontal position on tires with forks



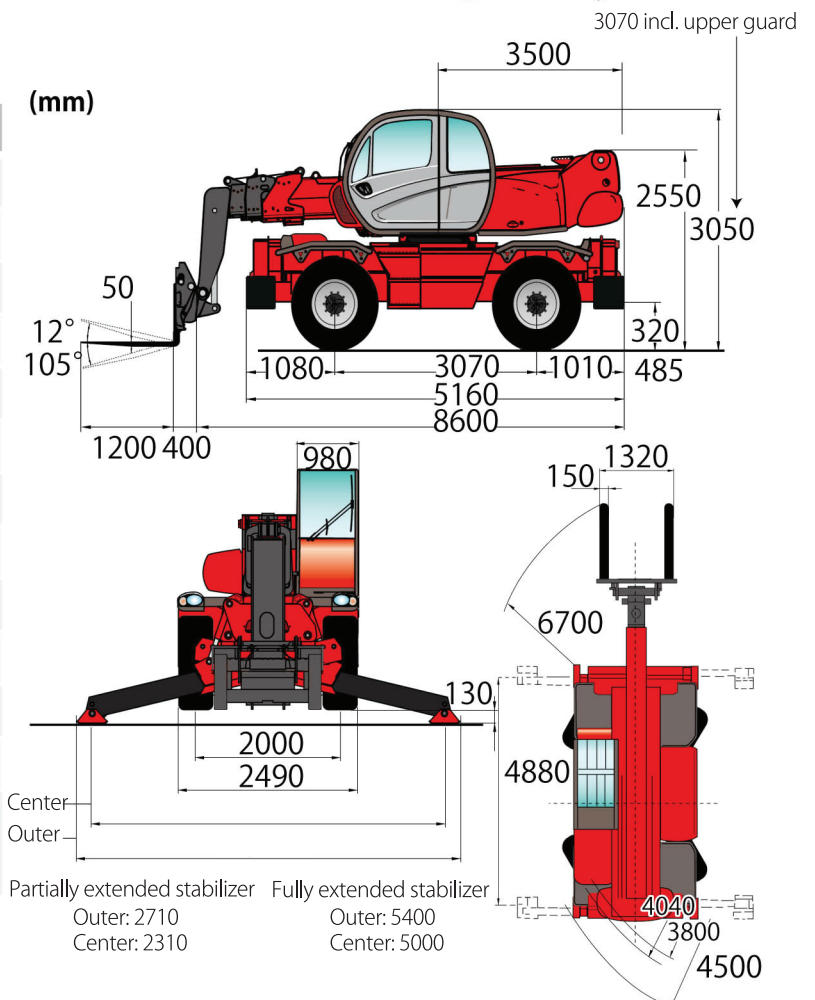
Dimensions

| MAKER | MANITOU |
|--|--------------------------------|
| Model | MRT2540P |
| Max. Lifting Height (m) | 24.60 |
| Max. Outreach (with Forks) (m) | 18.50 |
| Lifting Capacity (on Stabilizers) (kg) | 4000 |
| Turret Rotation (°) | 360 |
| Drawbar Pull (daN) | 8200 |
| Gradeability (°) | 21.8 |
| Min. Frame Outer Turning Radius (m) | 4.50 |
| GVW (kg) | 17165 |
| Max. Travel Speed (km/h) | 34.00 |
| Fuel | Diesel |
| Tank Capacity (L) | 230 |
| Qualifications | |
| ■ When working | Depends on the attachment |
| ■ When driving on public roads | Large special license required |

※ Engine complies with European Stage 4 emission standards.

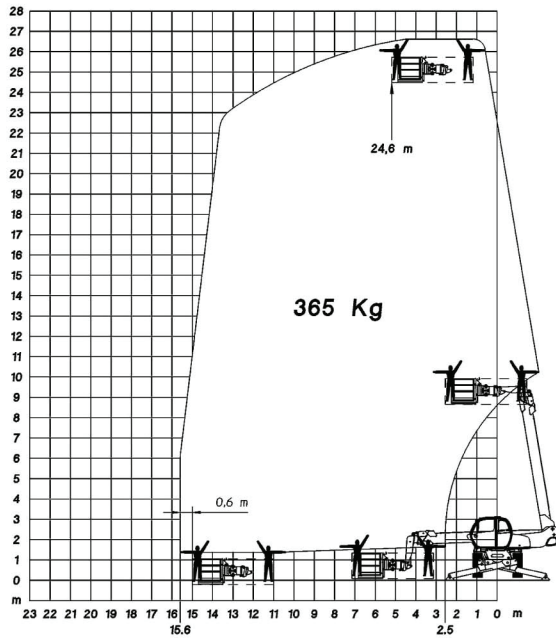
※ The attachments are interchangeable, refer to page 61 for details.

(mm)

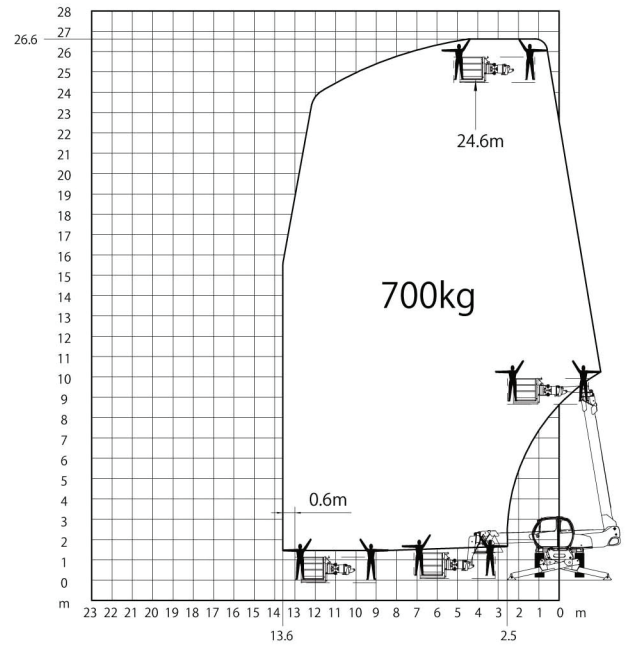


TELEHANDLER ROTATING TYPE

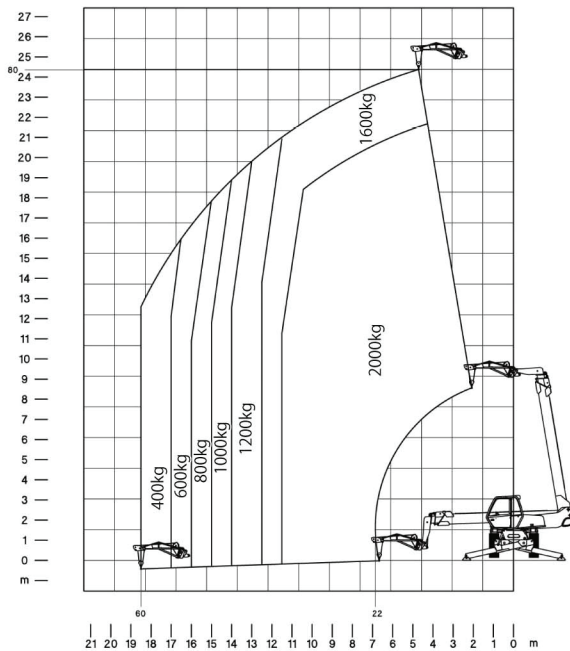
**Rotation on stabilizers with
PSE 4400 / 365 platform**



**Rotation on stabilizers with
PSE 4400 / 700 D platform**



**Rotation on stabilizers with
extension jib with winch PT2000**



**Rotation on stabilizers with
1m³ bucket CBR1000**

